

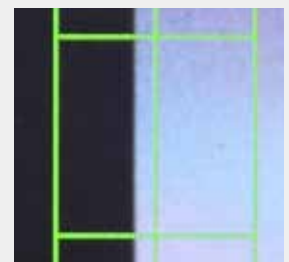


Web Guide Sensor PSM-2000 Sensor Head PPM-2000 Operation Panel

Pattern and character can also be followed.



Pattern / Character



Transparent film on mirror finished roll

Outline

In addition to continuous patterns such as web edges and printed line marks, this sensor also detects the position of intermittent patterns such as pictures and letters. It's combined with exclusive controller and driving machine and meander correction of a web is performed.

Feature

- **Follow an intermittent pattern**
By pattern matching, intermittent patterns such as pictures and letters can be followed in addition to web edges and printed line marks.
- **Enables detection of various Web**
Various webs can be detected by using built-in filter.
Detection of transparent film edge on specular roll is also possible.
- **One touch teaching**
It is possible to teach a reference image to be tracked with one touch.



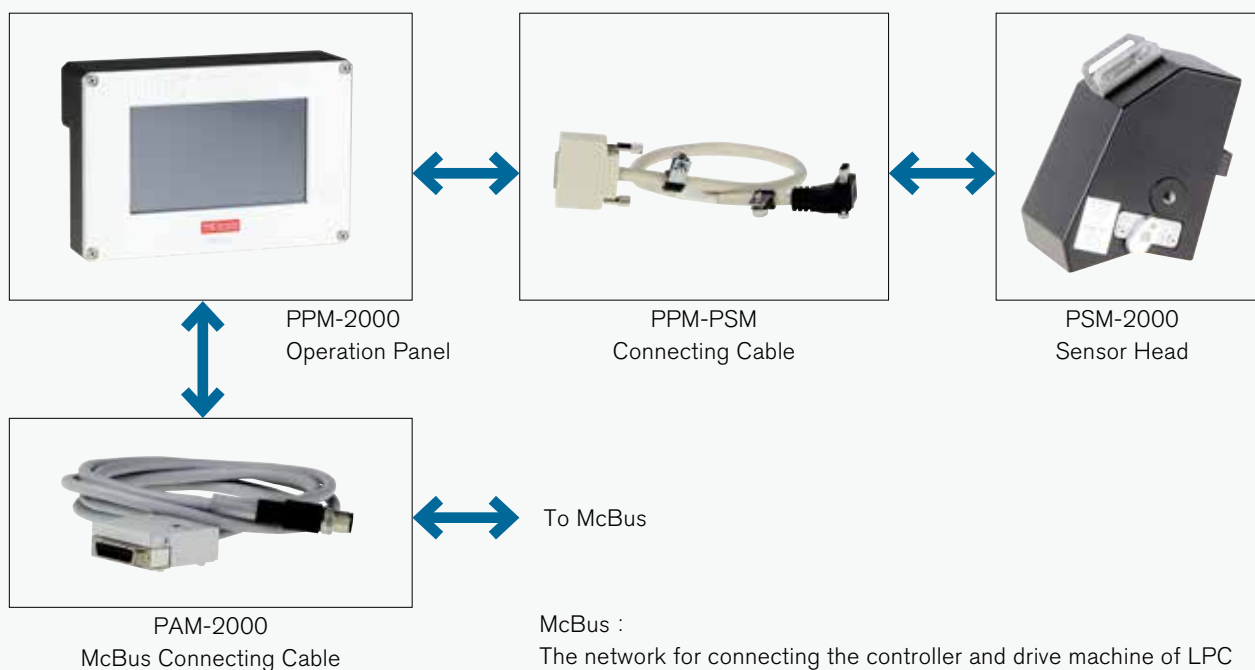
Screen Explanation

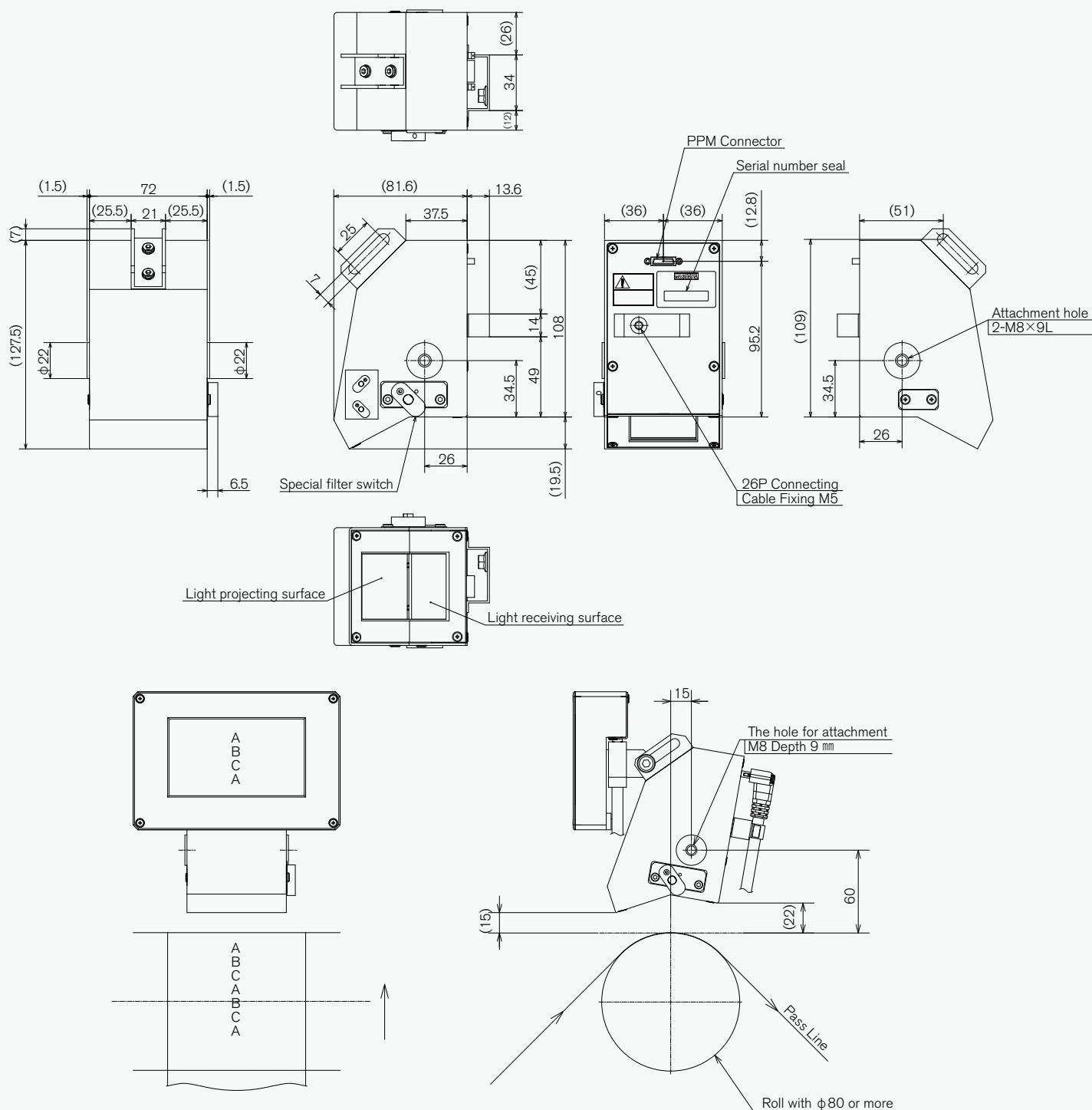


- It is easy to check the follow-up state by displaying imaged images and deviations.
- It can also be used as a remote controller of LPC by operation buttons.
- It is convenient to switch the operation mode and adjust the parameters at the sensor's hand.
- The reference image to be a follow-up of the target can be stored up to three, and can be used at any time call.

Equipment Composition

This sensor consists of the following four parts.
Each of these will be arranged separately.





株式会社 三橋製作所

MITSUHASHI CORPORATION



Lending “hands” to replace human hands.

<https://www.mitsubishi-corp.co.jp/en/>

☐ Head Office/
Factory

1 Sekizan-cho Yamanouchi Ukyo-ku Kyoto
615-0082 Japan
TEL:+81-75-316-3300 FAX:+81-75-313-7595

☐ Tokyo Office/
Overseas Sales Division

Yoshikuni Komagata Bldg. 9F 2-4-11 Komagata
Taitoh-ku Tokyo 111-0043 Japan
TEL:+81-3-3847-9751 FAX:+81-3-3847-9753

☐ Kyushu Office

Room 3 Bldg. D Office Parea Naka II 1-5-3 Naka
Onojo City Fukuoka 816-0906 Japan
TEL:+81-92-476-3800 FAX:+81-92-476-3801