



Actuator for a Reel station drive PDM-400, 610, 620, 650



Outline

PDM-400, 610, 620 and 650 are the actuators which replaced DC motor of the conventional model of PD-400 610, 620, and 650 with the brushless DC motor. The installation is compatible with the conventional model. Backlash becomes small by having changed a use part, it could be made to perform meandering control sharp and highly accurate compared with the conventional model.

Feature

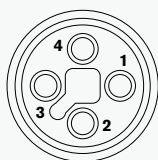
- A motor is maintenance-free by brushless.
- Compared with the conventional model, it is quicker, and high-precision meandering control is possible.
- Wiring work becomes easy in order to connect with a PEM type controller and a PSM type sensor by a connector.
- Full length is shortened from the conventional model and it is space-saving. (PDM-400 and 610 are shortened by 32 mm, PDM-650 is shortened by 47 mm.)



Specification

		PDM-400	PDM-610	PDM-620	PDM-650
Thrust N [kgf]		1300 [132]	1700 [173]		2400 [244]
Stroke mm		50	180		
Driving speed mm/sec		25	20		16
Mass kg		6	11	9	18
Power source		DC24V ± 20%			
Consumption current		2.5A			3.5A
Environment		Temperature : 0 ~ 50 °C Humidity 80% Rh or below (There needs to be no dew condensation)			
Connection equipment	Controller	PEM-200, PEM-3000			
	Sensor	PSM type sensor			
Power source		It supplies from an attached power connector. (Please prepare the cable in your company). CAN bus : It connects with a controller and a sensor using an optional exclusive cable. Refer to the catalog of a PEM controller for the connection method.			

Connector specification for power source connection

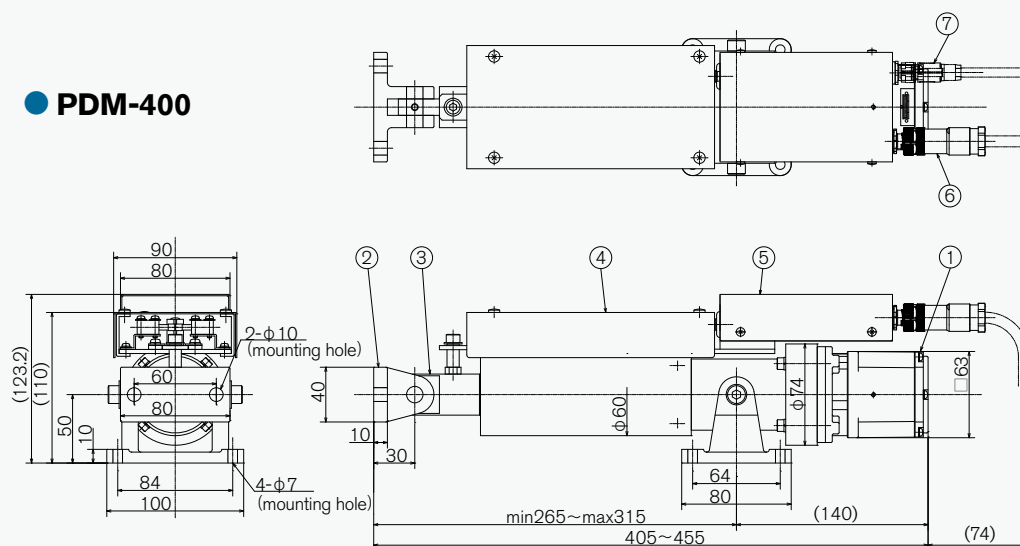


1. Grounding
2. 24V
3. 0V
4. non connect

Type : SACC-M12FST-3PECON-PG11-M
Connection system : Screw fastening type
Conformity cable : AWG18 ~ 16, Outer diameter ϕ 8 ~ 10mm

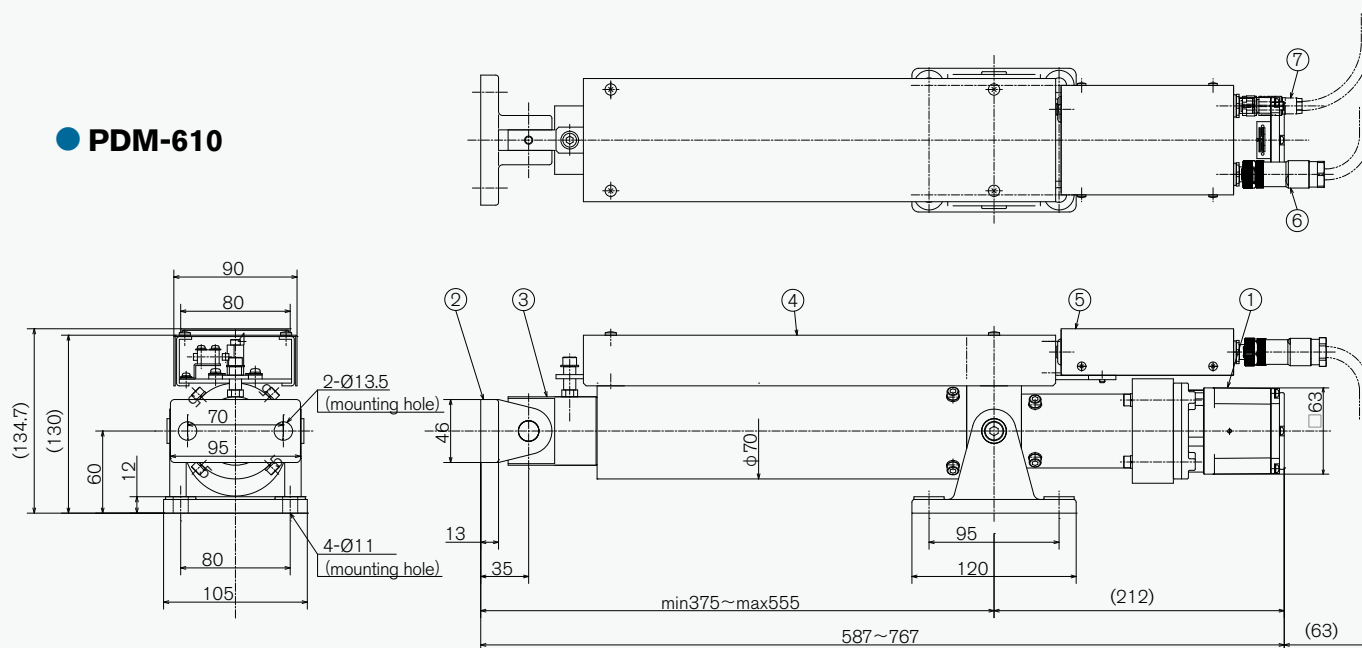
Outline Drawing

● PDM-400



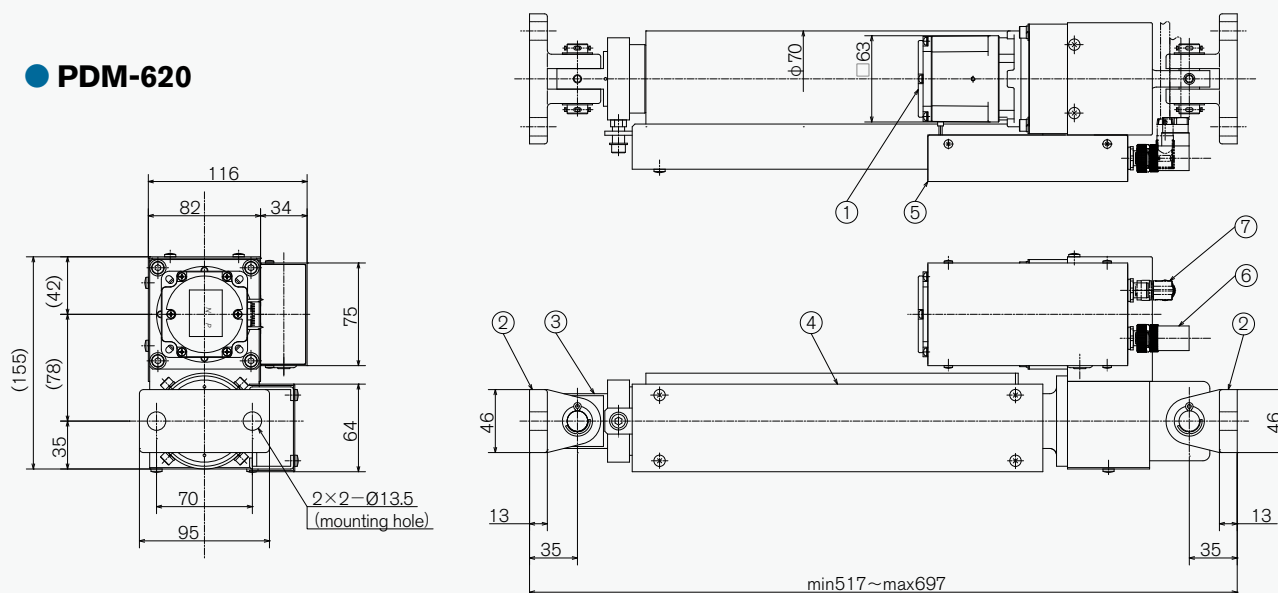
- ① Brushless DC motor
- ② Connector
- ③ Slide rod
- ④ Switch unit
- ⑤ Electric box
- ⑥ Power connector (Attachment)
- ※ Change in a light angle type is possible as an option.
- ⑦ The connection connector for CAN bus (Option)

● PDM-610



- ① Brushless DC motor
- ② Connector
- ③ Slide rod
- ④ Switch unit
- ⑤ Electric box
- ⑥ Power connector (attachment)
- ※ Change in a light angle type is possible as an option.
- ⑦ The connection connector for CAN bus (option)

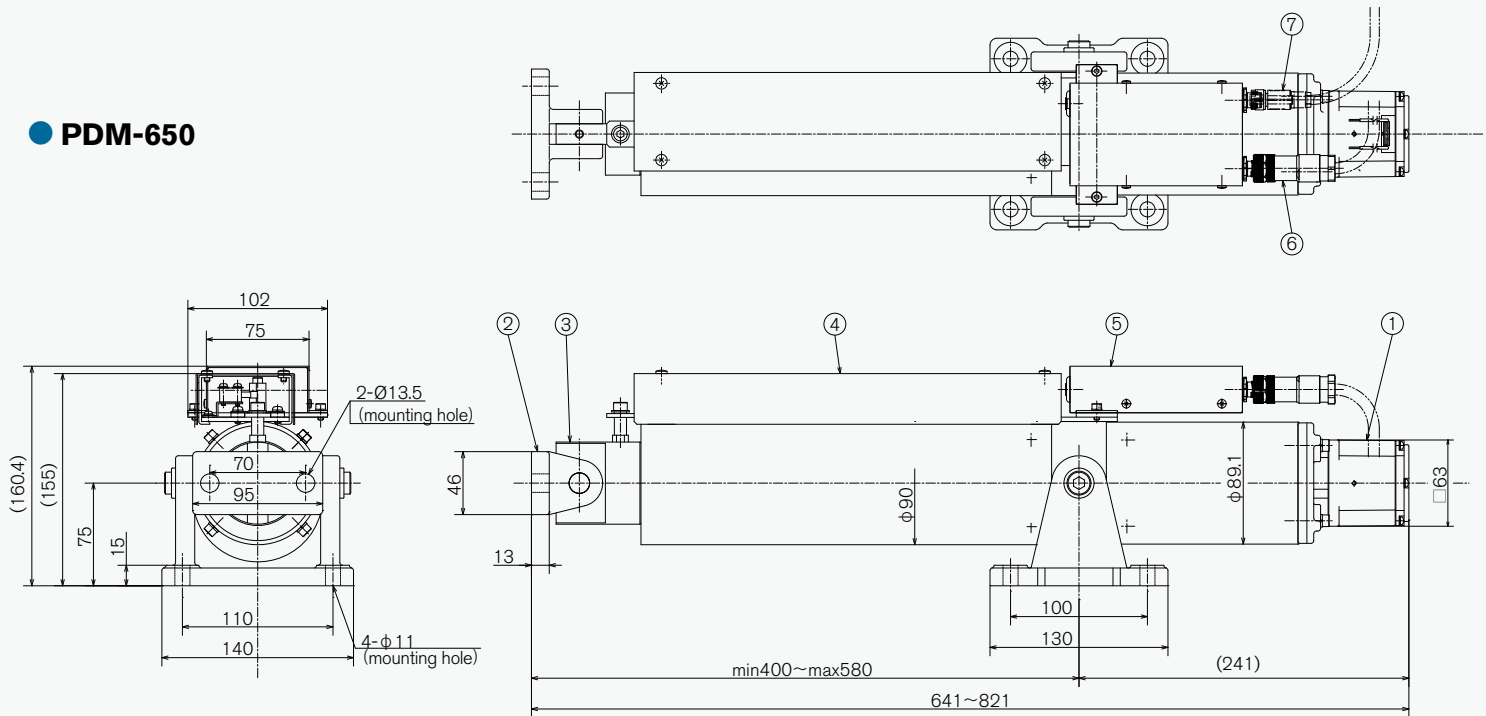
● PDM-620



- ① Brushless DC motor
- ② Connector
- ③ Slide rod
- ④ Switch unit
- ⑤ Electric box
- ⑥ Power connector (attachment)
- ※ Only light angle type
- ⑦ The connection connector for CAN bus (option)
- ※ Only light angle type



● PDM-650



- ① Brushless DC motor
- ② Connector
- ③ Slide rod
- ④ Switch unit
- ⑤ Electric box
- ⑥ Power connector (attachment)
- ※ Change in a light angle type is possible as an option.
- ⑦ The connection connector for CAN bus (option)



Lending “hands” to replace human hands.

<https://www.mitsuhashi-corp.co.jp/en/>

株式会社 三橋製作所

MITSUHASHI CORPORATION

☐ Head Office/
Factory

1 Sekizan-cho Yamanouchi Ukyo-ku Kyoto
615-0082 Japan
TEL:+81-75-316-3300 FAX:+81-75-313-7595

☐ Tokyo Office/
Overseas Sales Division

Yoshikuni Komagata Bldg. 9F 2-4-11 Komagata
Taitoh-ku Tokyo 111-0043 Japan
TEL:+81-3-3847-9751 FAX:+81-3-3847-9753

☐ Kyushu Office

Room 3 Bldg. D Office Parea Naka II 1-5-3 Naka
Onojo City Fukuoka 816-0906 Japan
TEL:+81-92-476-3800 FAX:+81-92-476-3801