

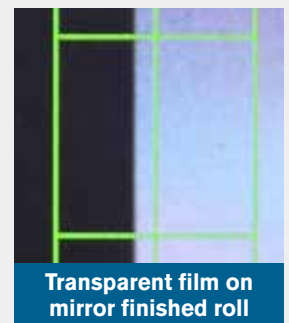


Web Guide Sensor PSM-2000 Sensor Head PPM-2000 Operation Panel

Pattern and character can also be followed.



Pattern / Character



Transparent film on mirror finished roll

Outline

In addition to continuous patterns such as web edges and printed line marks, this sensor also detects the position of intermittent patterns such as pictures and letters. It's combined with exclusive controller and driving machine and meander correction of a web is performed.

Feature

- **Follow an intermittent pattern**
By pattern matching, intermittent patterns such as pictures and letters can be followed in addition to web edges and printed line marks.
- **Enables detection of various Web**
Various webs can be detected by using built-in filter.
Detection of transparent film edge on specular roll is also possible.
- **One touch teaching**
It is possible to teach a reference image to be tracked with one touch.



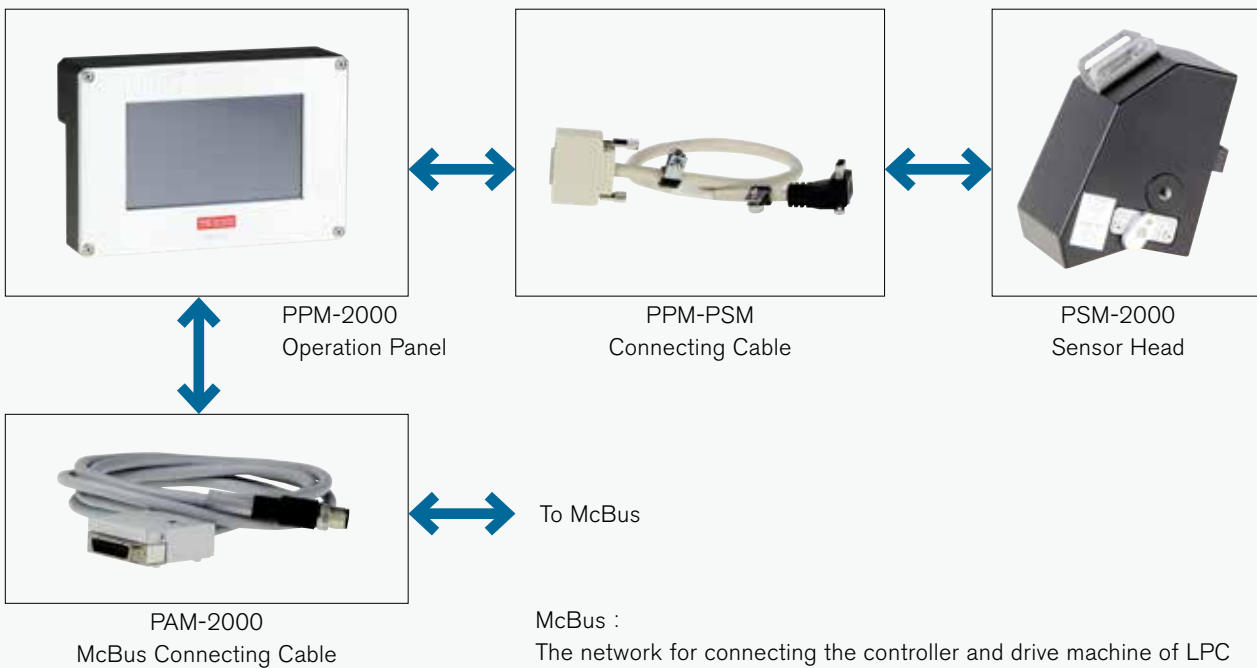
Screen Explanation



- It is easy to check the follow-up state by displaying imaged images and deviations.
- It can also be used as a remote controller of LPC by operation buttons.
- It is convenient to switch the operation mode and adjust the parameters at the sensor's hand.
- The reference image to be a follow-up of the target can be stored up to three, and can be used at any time call.

Equipment Composition

This sensor consists of the following four parts.
Each of these will be arranged separately.

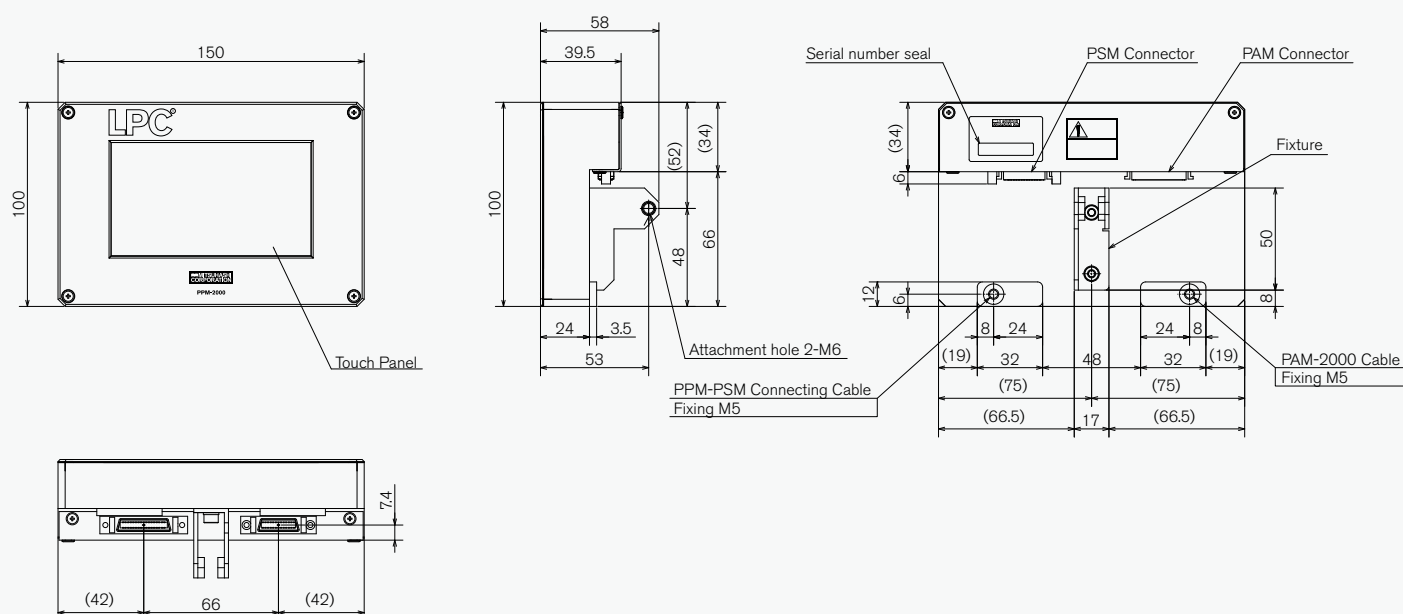


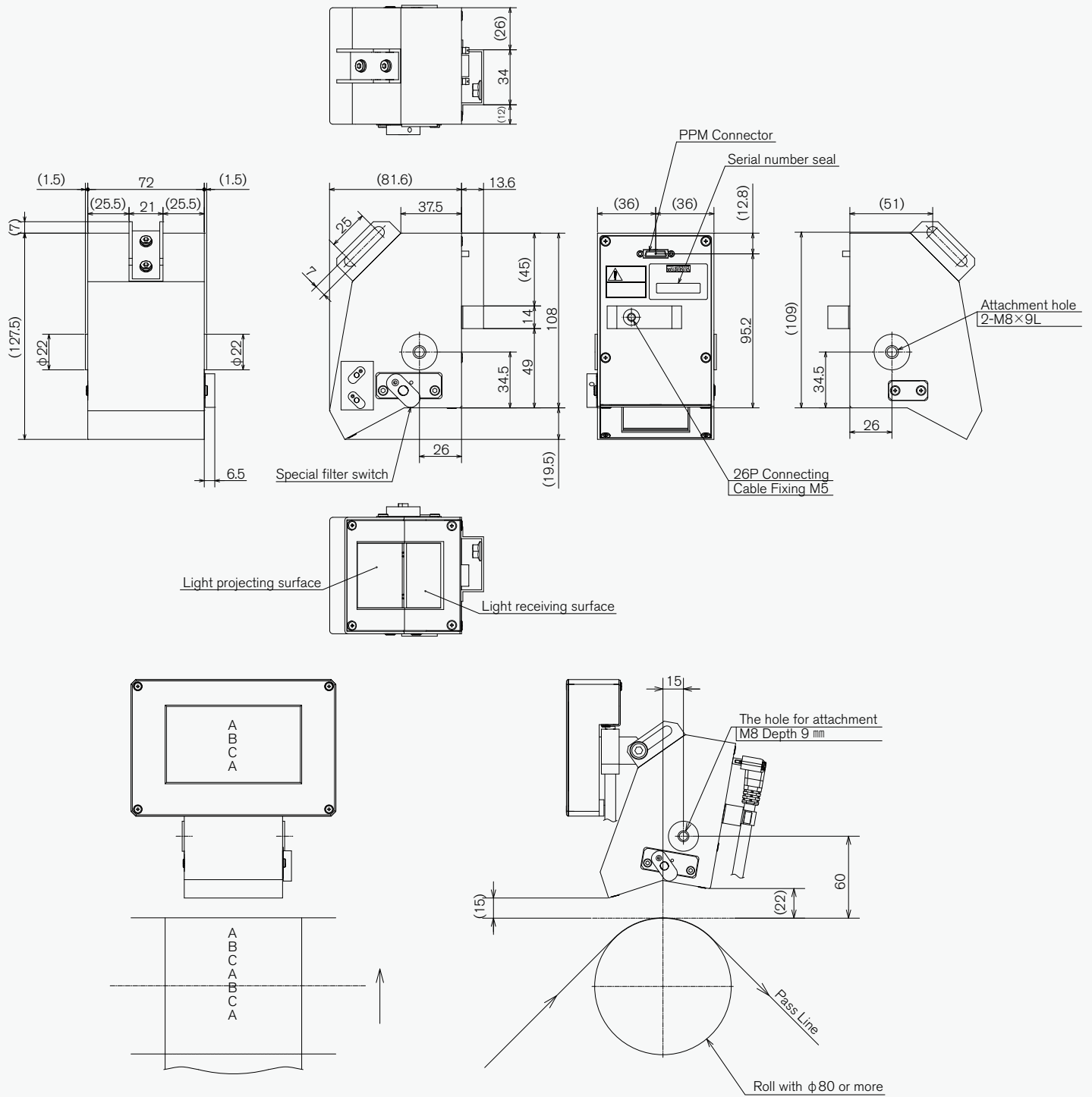
Technical Data

External Dimension	Refer to outline drawing	
Power Source	DC24V \pm 20% (It supplies through McBus) ※	
Consumption Current	0.6A (Total current consumption of PPM-2000, PSM-2000, PAM-2000)	
Mass	Sensor head PSM-2000 : About 700g Operation panel PPM-2000 : About 500g	
Body Material	Sensor head PSM-2000 : ADC12, SPCC Operation panel PPM-2000 : ADC12, A5052	
Installation Environment	Temperature	0 ~ 40°C
	Humidity	80% RH or less (No condensation)
	Atmosphere	Indoor (direct rays should not hit) It is airy. Corrosive Gases · Flammable Gases · Oil Mist · There is no dust.
	Others	Please avoid installation at a place with much vibration.
A connectable controller	PEM-200、PEM-3000	
Image Sensor	CCD Area sensor (Collar)	
Light Source	White LED	
Imaging Area	24 × 9.6mm	
Resolution	0.01mm	
Scan Frequency	220Hz	
Detection Roll	ϕ 80mm or more	
Cable Length	PPM-PSM Connecting cable: 0.4 m PAM-2000McBusConnecting cable: 2 m	

※ McBus: The network for connecting the controller and drive machine of LPC

Outline Drawing





Lending "hands" to replace human hands.

www.mitsubishi-corp.co.jp

株式会社 三橋製作所 MITSUHASHI CORPORATION

- Head Office/ Factory
 1 Sekizan-cho Yamanouchi Ukyo-ku Kyoto
 615-0082 Japan
 TEL:+81-75-316-3300 FAX:+81-75-313-7595
- Tokyo Office/ Overseas Sales Division
 Yoshikuni Komagata Bldg. 9F 2-4-11 Komagata
 Taitoh-ku Tokyo 111-0043 Japan
 TEL:+81-3-3847-9751 FAX:+81-3-3847-9753
- Kyushu Office
 Minamikindai Building 6F, 4-2-10 Hakataekiminami
 Hakata-ku Fukuoka 812-0016 Japan
 TEL:+81-92-476-3800 FAX:+81-92-476-3801