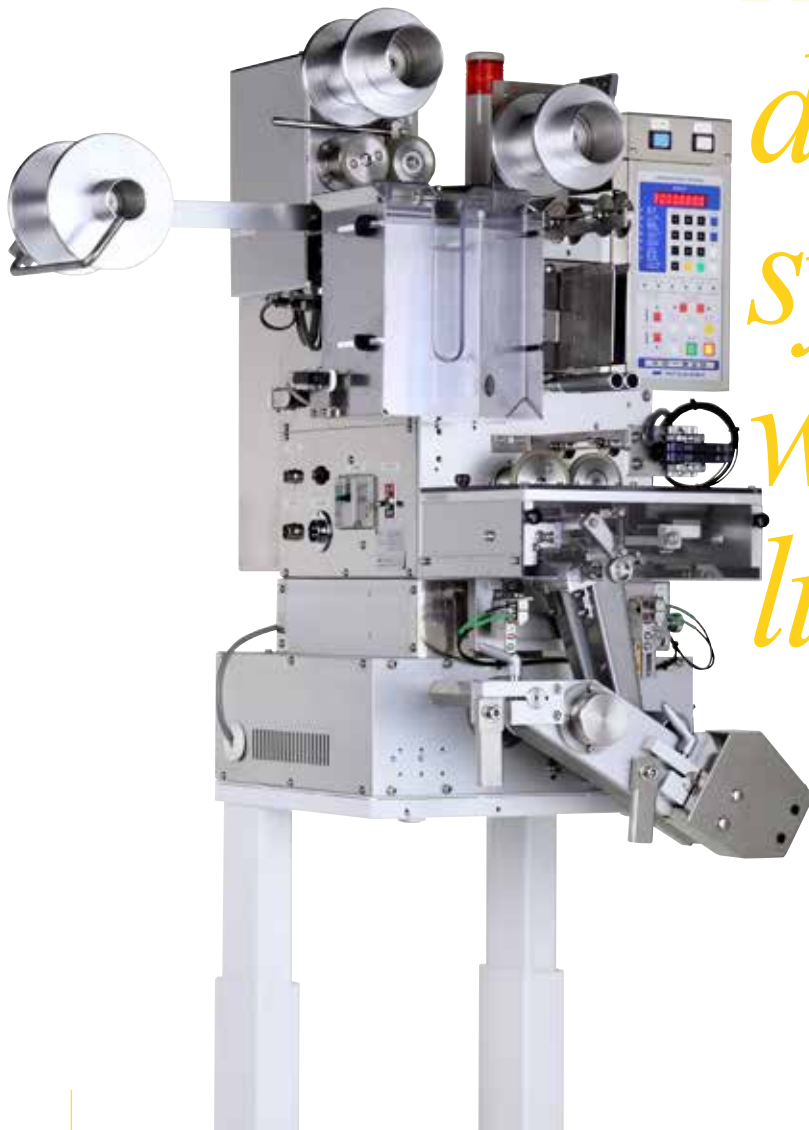




# KD-820 & KK-360 POUCH DISPENSER



*Accurate  
dispensing  
synchronized  
with  
line speed*



Position dispensing unit:KK-360

## Features

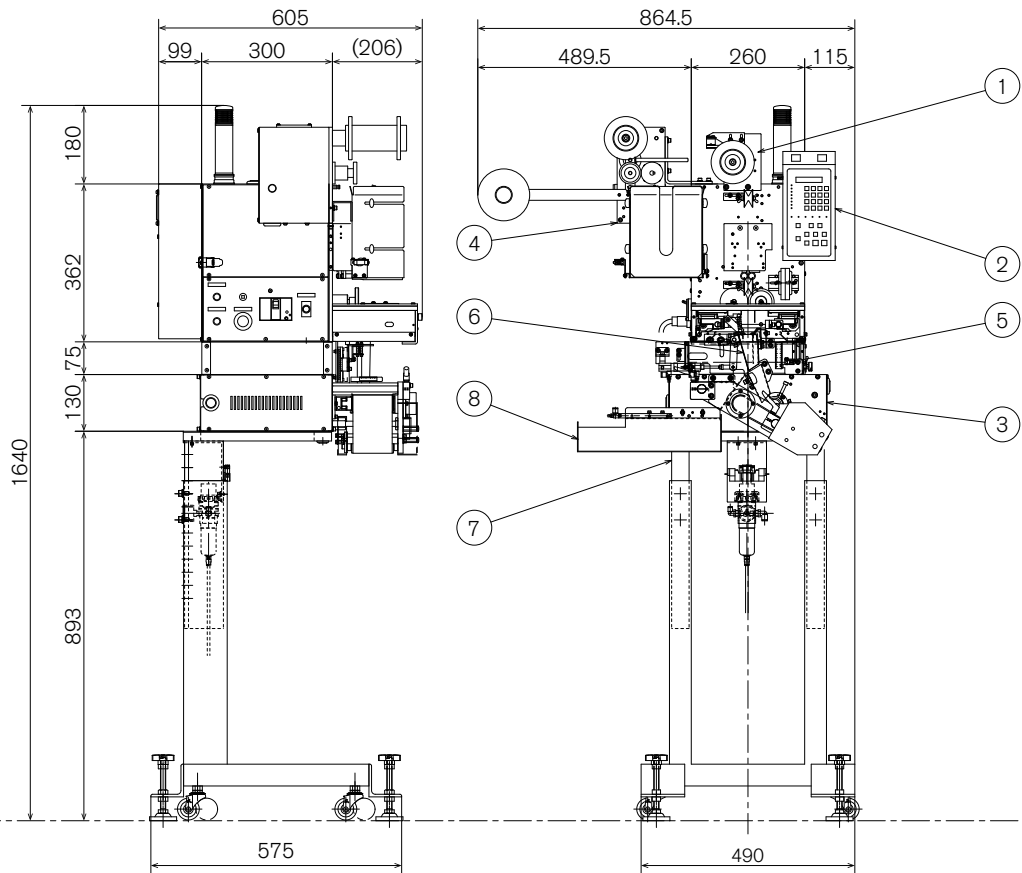
- Receives encoder signals from the packaging machine for dispensing sachets synchronized with the line speed.
- An automatic ejection chute can now be easily attached.
- To improve maintainability, the structure of the position dispensing unit has been redesigned.

## Specifications

Capabilities	Max.200 sachets / min (at sachet length of 70mm or less)
Sachet Specification	Width 30-100mm
	Length 30-150mm
	Thickness 7mm (max.)
Power	AC200/220V, 50/60Hz, 3 Phase, 1.5kVA (With KD-820)
Weight	Approx. 15kg (approx. 45kg with KD-820)

## Drawing

- ① KD-820
- ② Operation panel
- ③ Position dispensing unit:KK-360
- ④ Feeding unit (Option)
- ⑤ Mis-cut sensor
- ⑥ Auto-ejection shute(Optional)
- ⑦ Frame
- ⑧ Ejection table (Option)



Lending “hands” to replace human hands.

<https://www.mitsuhashi-corp.co.jp>

### 株式会社 三橋製作所 MITSUHASHI CORPORATION

- Head Office/ Factory
 1 Sekizan-cho Yamanouchi Ukyo-ku Kyoto 615-0082 Japan  
TEL:+81-75-316-3300 FAX:+81-75-313-7595
- Tokyo Office/ Overseas Sales Division
 Yoshikuni Komagata Bldg. 9F 2-4-11 Komagata Taitoh-ku Tokyo 111-0043 Japan  
TEL:+81-3-3847-9751 FAX:+81-3-3847-9753
- Kyushu Office
 Minamikindai Building 6F, 4-2-10 Hakataekiminami Hakata-ku Fukuoka 812-0016 Japan  
TEL:+81-92-476-3800 FAX:+81-92-476-3801