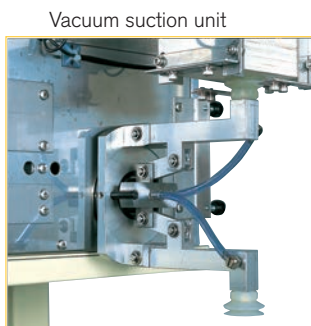


## CD-920 HIGH SPEED TYPE CARD DISPENSER

*HIGH SPEED &  
SMOOTH Movement*



### General

- Designed to dispense various cards, stickers, cardboards, etc. onto designated position on the conveyor line
- Patent registered combination cam adopted for drive mechanism achieved compact & smooth movement
- Feeding (stocking) & dispensing methods of cards can be chosen freely

### Features

- Portable & light-weight designed, to achieve compact & user-friendly card dispensing machine
- Automatic dispensing at synchronized line speed by receiving signals from equipments such as packing machine
- Easy pre-setting by dispense counter function
- Cam-rack is adopted for smooth movement to prevent work material damage (Cam-rack: CD-820, Parallel cam: CD-920)

# PACK DISPENSING SYSTEM

Dispense

## Control Box

- Micro-computer control for counter & various data display
- Independent design enables free mounting according to operation position. Remote operation also available
- Dispense position is adjustable during operation by fine tuning the dispense timing through a Position Switch

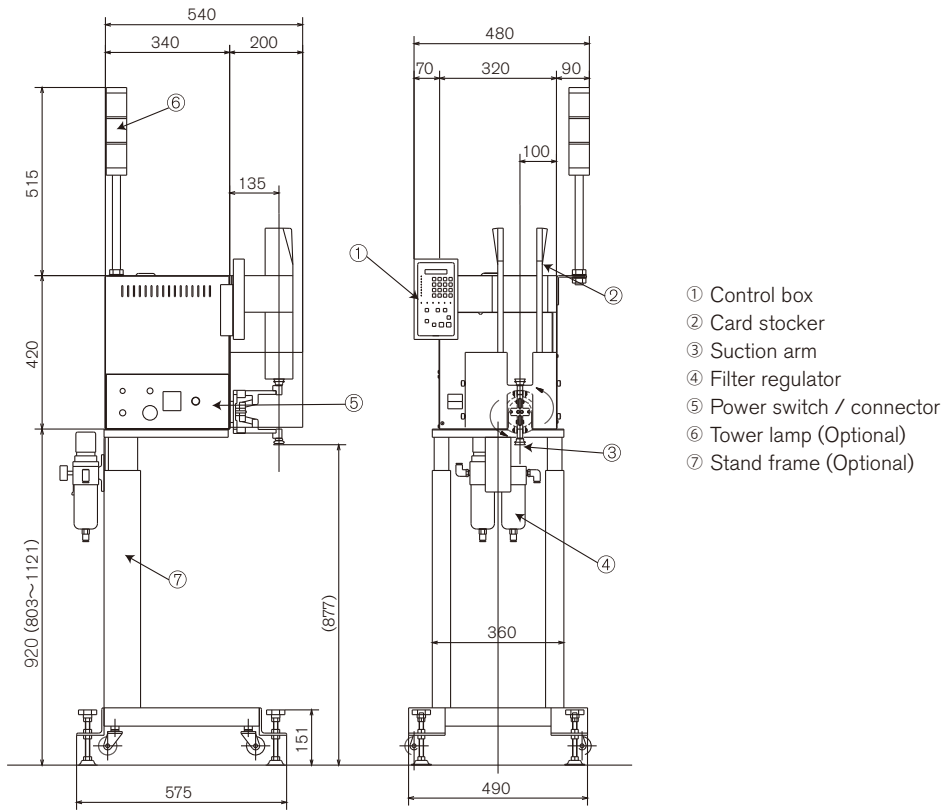


Control Box

## Basic Specs

Dispense Capacity	Max. 200 pcs / minute
Card Size	Width: 30 – 70mm Length: 30 – 100mm
Equipment Dimension	634mm (W) x 812mm (H) x 755mm (D)
Power	AC200/220V, 50/60Hz, 3 Phase, 1kVA
Air Utility	0.5MPa 210 ℓ /min. (ANR) * Dry air
Weight	40kg

## Overview



Lending “hands” to replace human hands.

[www.mitsubishi-corp.co.jp](http://www.mitsubishi-corp.co.jp)

株式会社 三橋製作所

MITSUHASHI CORPORATION

□ Head Office/  
Factory

1 Sekizan-cho Yamanouchi Ukyo-ku Kyoto  
615-0082 Japan  
TEL:+81-75-316-3300 FAX:+81-75-313-7595

□ Tokyo Office/  
Overseas Sales Division

Yoshikuni Komagata Bldg. 9F 2-4-11 Komagata  
Taitoh-ku Tokyo 111-0043 Japan  
TEL:+81-3-3847-9751 FAX:+81-3-3847-9753

□ Kyushu Office

Minamikindai Building 6F, 4-2-10 Hakataekiminami  
Hakata-ku Fukuoka 812-0016 Japan  
TEL:+81-92-476-3800 FAX:+81-92-476-3801

P-021E

150511SK