

# FW-1000 CHAIN POUCH WINDER



## Features

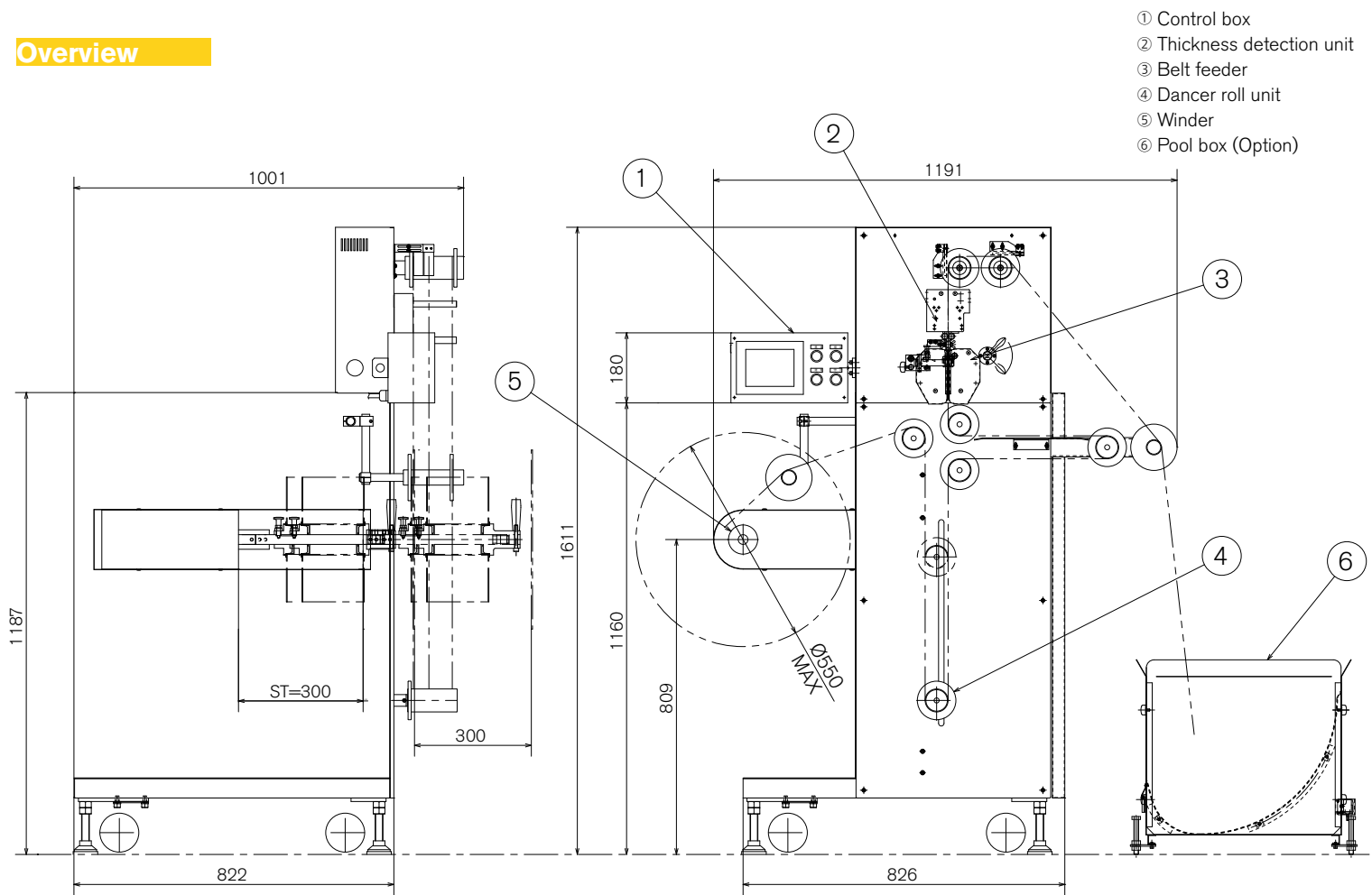
- High speed winding capacity at 70m/min.
- Clear view 5.7inch touch-panel, improved operation.
- By using belt feeder, sachet material and tension not affected and it can stably supply.
- Possible to winding at low tension(1N).
- Memory up to 20 different product data.  
With copy function, operation still easy even if there are many product.

## Basic Specs

Winding Capacity	Max. 70m/minute	Roll Diameter	φ 75 – φ 550mm
Winding Direction	Left / Right Adjustable	Winding Width	0 – 300mm
Pouch Specification	Pouch Type: 3, 4-Seal Width: 20mm – 100mm Length: 20mm – 90mm	Core Diameter	Over φ 35mm (I.D.)
		Tension	1 – 30 N
		Power	AC200V, 50/60Hz, 3 Phase, 1.5kVA

\*Winding capacity will change depend on pouch specifications and/or conditions.

## Overview



Lending “hands” to replace human hands.

[www.mitsubishi-corp.co.jp](http://www.mitsubishi-corp.co.jp)

### 株式会社 三橋製作所 MITSUHASHI CORPORATION

- Head Office/ Factory  
 1 Sekizan-cho Yamanouchi Ukyo-ku Kyoto  
 615-0082 Japan  
 TEL:+81-75-316-3300 FAX:+81-75-313-7595
- Tokyo Office/ Overseas Sales Division  
 Yoshikuni Komagata Bldg. 9F 2-4-11 Komagata  
 Taitoh-ku Tokyo 111-0043 Japan  
 TEL:+81-3-3847-9751 FAX:+81-3-3847-9753
- Kyushu Office  
 Minamikindai Building 6F, 4-2-10 Hakataekiminami  
 Hakata-ku Fukuoka 812-0016 Japan  
 TEL:+81-92-476-3800 FAX:+81-92-476-3801