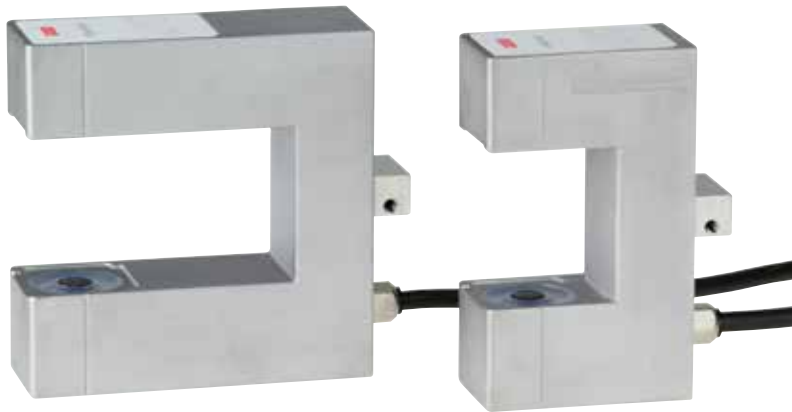




## Ultrasonic Edge Sensor PSM-46W Series



PSM-46WX

PSM-46W



Switch Panel  
Mounting

### Outline

PSM-46W series is a sensor for detecting the edge of a web.

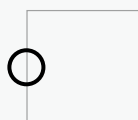
Meandering correction of a web is made in combination with a controller and a driving device of G-series.

### Feature

- "W", "WX" You can choose from two types of shapes.
- Since the edge position of a web is detected by change of the transmission amount of ultrasonic wave, it can detect correctly, without being influenced by a color, a design, and transparency.
- Since "46WS" with a switch panel can perform mode change and teaching operation by the sensor body, it is convenient.

Moreover, the thing with a switch panel can also be made the simple system (only a driving device and a sensor) which does not use a PEM type controller.

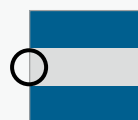
### Detection Object



Transparent  
Web Edge



Opaque  
Web Edge

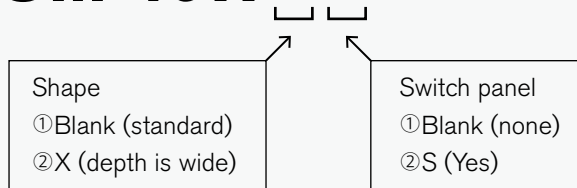


Various Colors  
Coexist Edge



## Model

# PSM-46W



## Technical Data

	PSM-46W Series	PSM-46WX Series
External Dimension	Refer to outline drawing	
Power Source	DC24V $\pm$ 20% (It supplies through McBus) ※	
Consumption Current	35mA(When the power supply voltage is 24 VDC)	
Installation Environment	Temperature: 0 ~ 40 ° C Humidity: 80% Rh or less (no condensation)	
Mass	About 300g	About 350g
Supplied Cable	0.3m、 With a tip connector (M12 male connector 5 pole, A coding)	
Detection Object	Web Edge	
Detection Range	2.5mm	
Detection Method	Ultrasound (frequency 300 kHz)	

※ McBus: The network for connecting the controller and drive machine of LPC

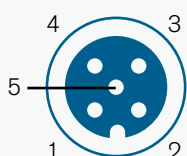
### < Connection equipment when using in master mode >

The table below shows the devices that can be connected to a system with a switch panel (PSM master system) without a controller.

Connection equipment	Driving Device	• Roll guider : PGM series • Actuator : PDM series
	Option	• Extended I / O module : PXM-100 10 inputs … Reference position set, Mode selection(MAN/CENT/AUTO), Driving machine operation 10 outputs … Sensor status, Mode state (MAN/CENT/AUTO)、 Driving machine stroke end, Center, System run • Remote BOX : PTM-100、 PEM-200 (What was set as remote mode)

Notes) McBus cable and branch connector are required to connect this machine, driving unit, and other optional equipment.  
Please select according to the equipment to be connected.  
In addition, you need a connector to supply power to McBus.  
We are preparing the above-mentioned cable and connectors at our company. (Option)

### McBus power supply connector specifications



1. Ground Terminal
2. V + (24V)
3. V - (0V)
4. non connect(CAN\_H)
5. non connect(CAN\_L)

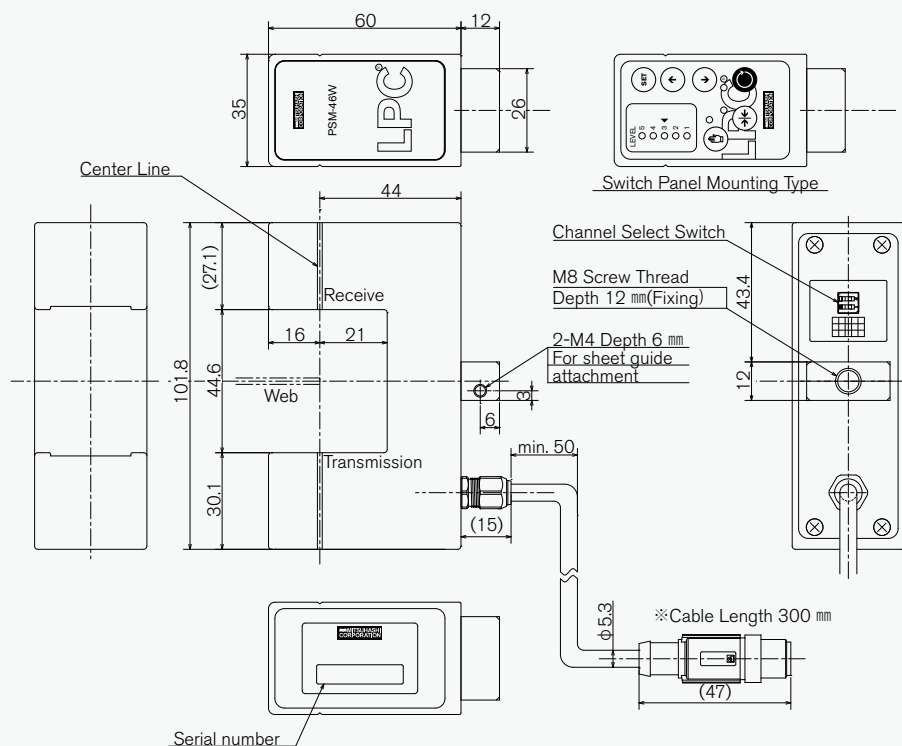
Connector :

M12 Male Connector, 5-pole, A Coded

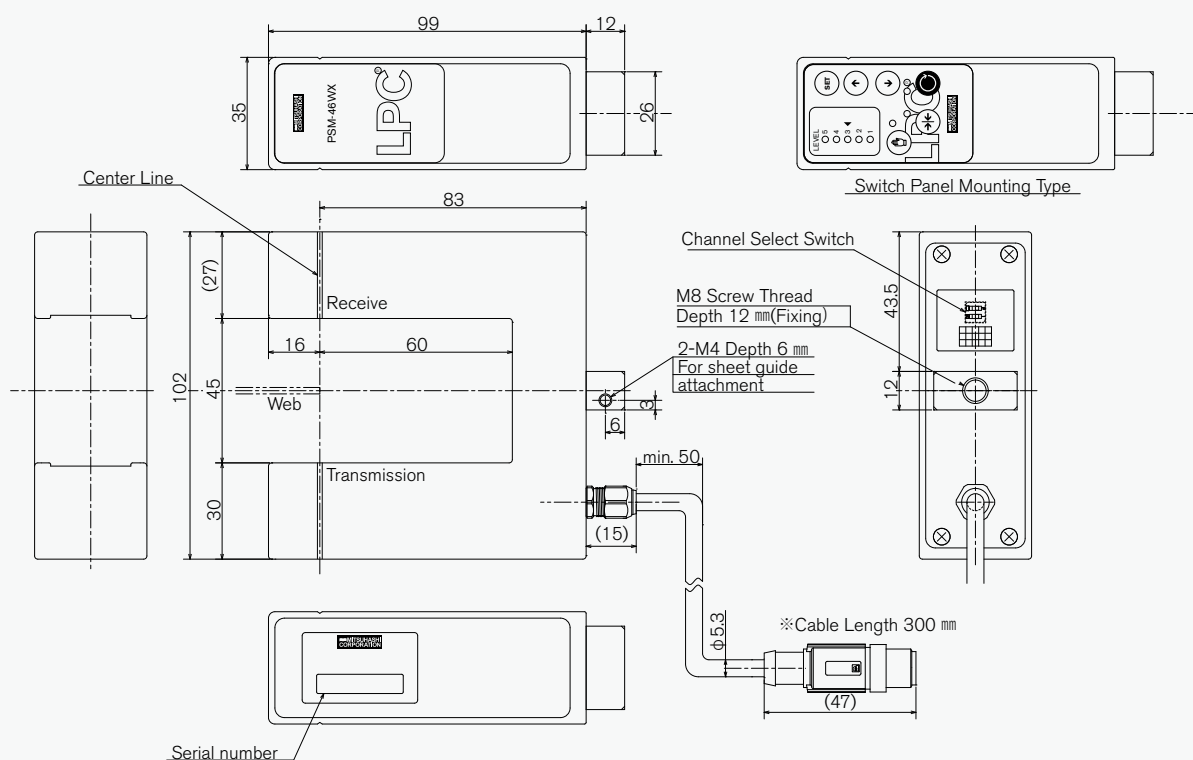
Adaptation Connector : M12 Female Connector

## Outline Drawing

### ● PSM-46W Series



### ● PSM-46WX Series





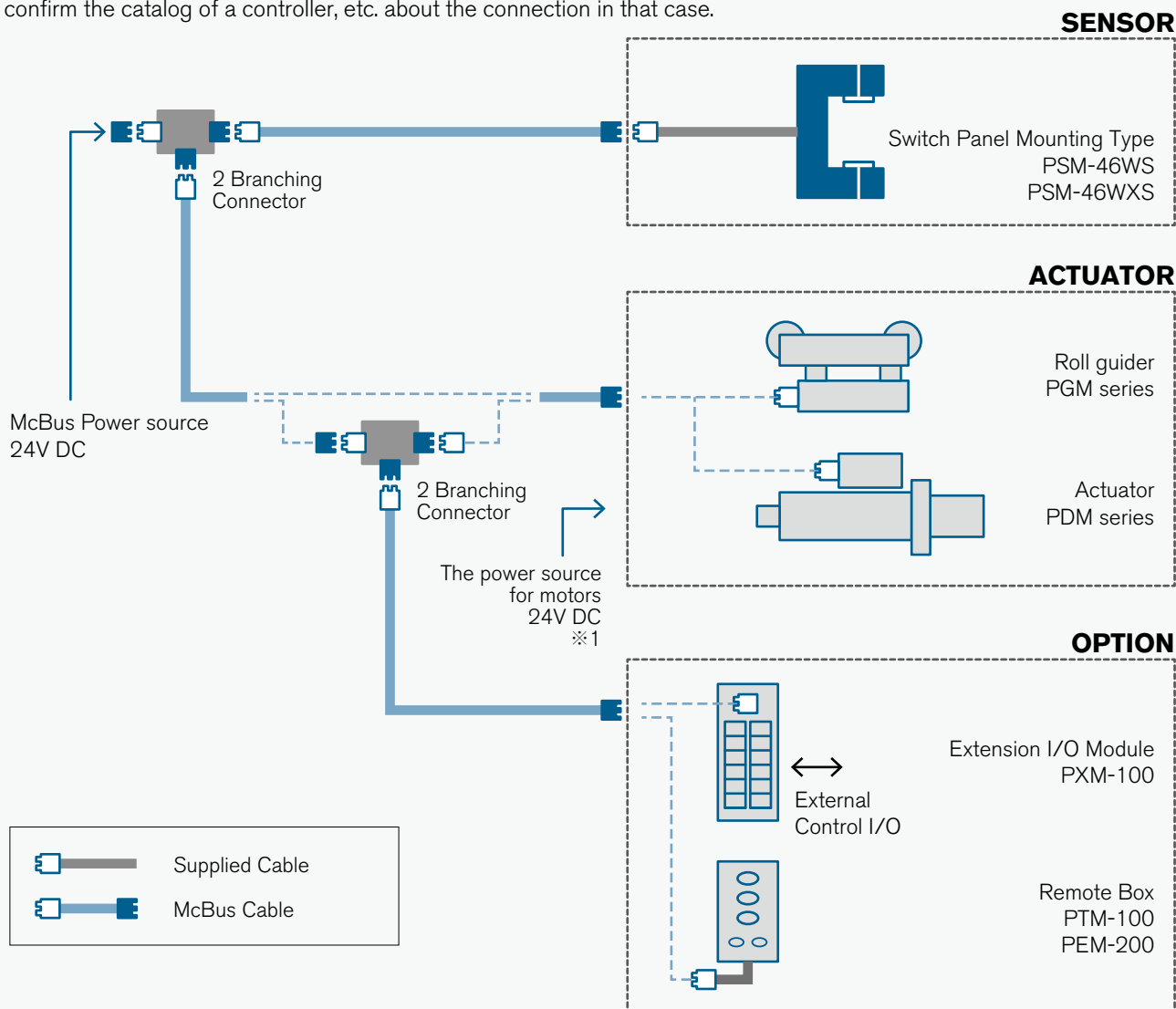
## Connection Diagram

※ The type with switch panel can be a simple system (master mode) that does not use a PEM type controller.

The connection diagram in that case is shown below.

Since a controller is needed separately, the type without a switch panel should be careful.

Please confirm the catalog of a controller, etc. about the connection in that case.



※ 1 The specification of the power source for motors changes with kinds of driving device.  
The specification of a power source and the method of connection should confirm the specification of a driving device.

## 株式会社 三橋製作所

## MITSUHASHI CORPORATION

□ Head Office/  
Factory

1 Sekizan-cho Yamanouchi Ukyo-ku Kyoto  
615-0082 Japan  
TEL:+81-75-316-3300 FAX:+81-75-313-7595

□ Tokyo Office/  
Overseas Sales Division

Yoshikuni Komagata Bldg. 9F 2-4-11 Komagata  
Taitoh-ku Tokyo 111-0043 Japan  
TEL:+81-3-3847-9751 FAX:+81-3-3847-9753

□ Kyushu Office

Room 3 Bldg. D Office Pareia Naka II 1-5-3 Naka  
Onojo City Fukuoka 816-0906 Japan  
TEL:+81-92-476-3800 FAX:+81-92-476-3801



Lending “hands” to replace  
human hands.

<https://www.mitsuhashi-corp.co.jp/en/>