



CONTROLLER PEM-3000

The high-end model
controller
Pursued
usability
function



Outline

PEM-3000 is a controller which carries out meandering control of a web in combination with the sensor and a driving device of G series.

The touch panel of the color liquid crystal was carried and universal operability is realized.

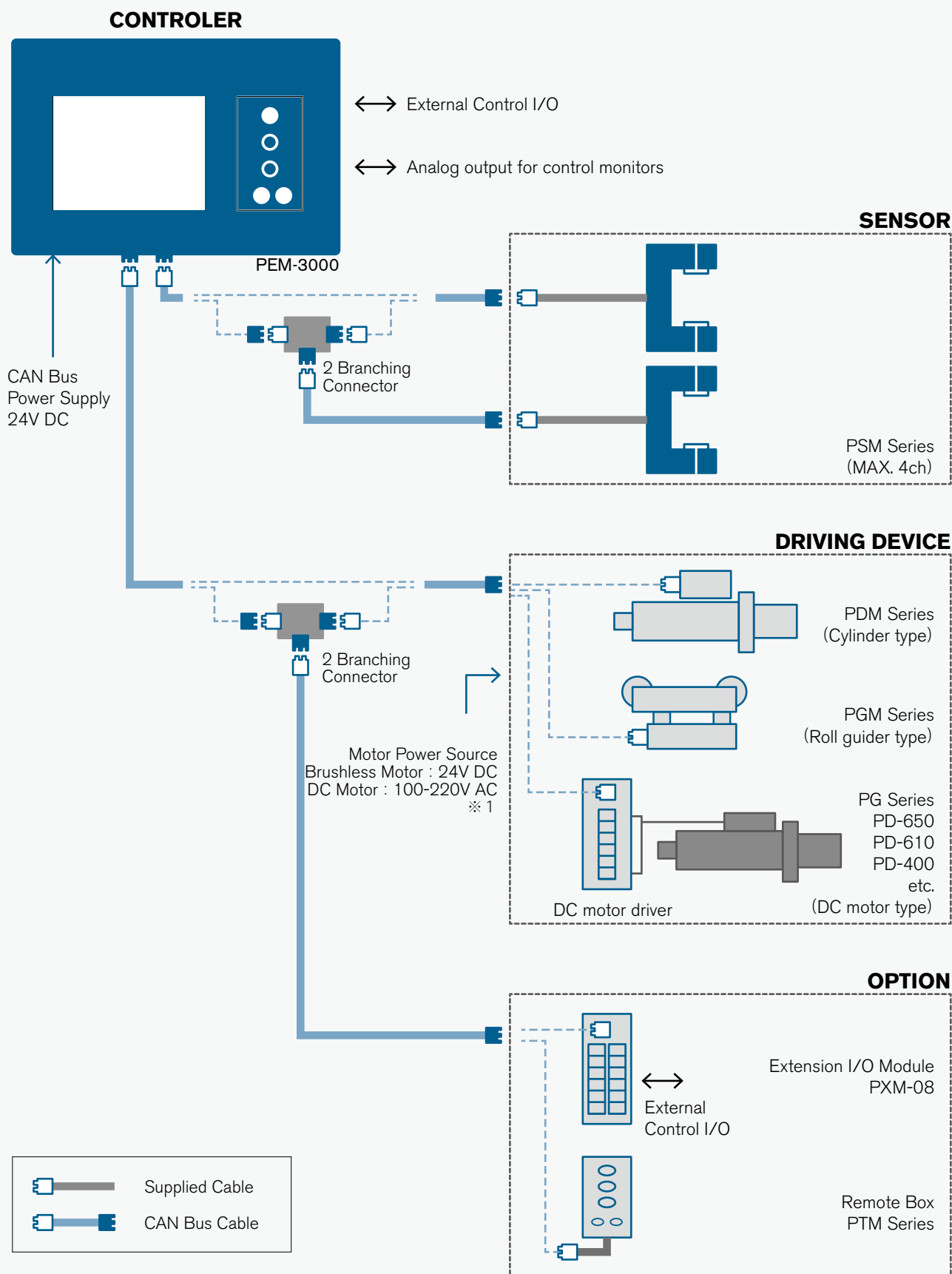
The interface with external equipment, such as an external I/O terminal for controlling LPC from the outside and an analog output terminal for monitoring the state of a web, is equipped standardly.

Feature

- The touch panel of a color liquid crystal can be operated intuitively.
- For external control, the input terminal for changing operational mode and the output terminal of alarm are equipped standardly.
- The analog output for monitoring the state of the web which the sensor detected is equipped standardly.
- The connection with a sensor or a driving device serves as a connector type, and can wire easily.
- A sensor is connectable to four channels. While using it as an object for meandering control, it can be used as an object for the monitor of a web.



Configuration



※ 1 The specification of the power source for motors changes with kinds of driving device. The specification of a power source and the method of connection should confirm the specification of a driving device or a motor driver.

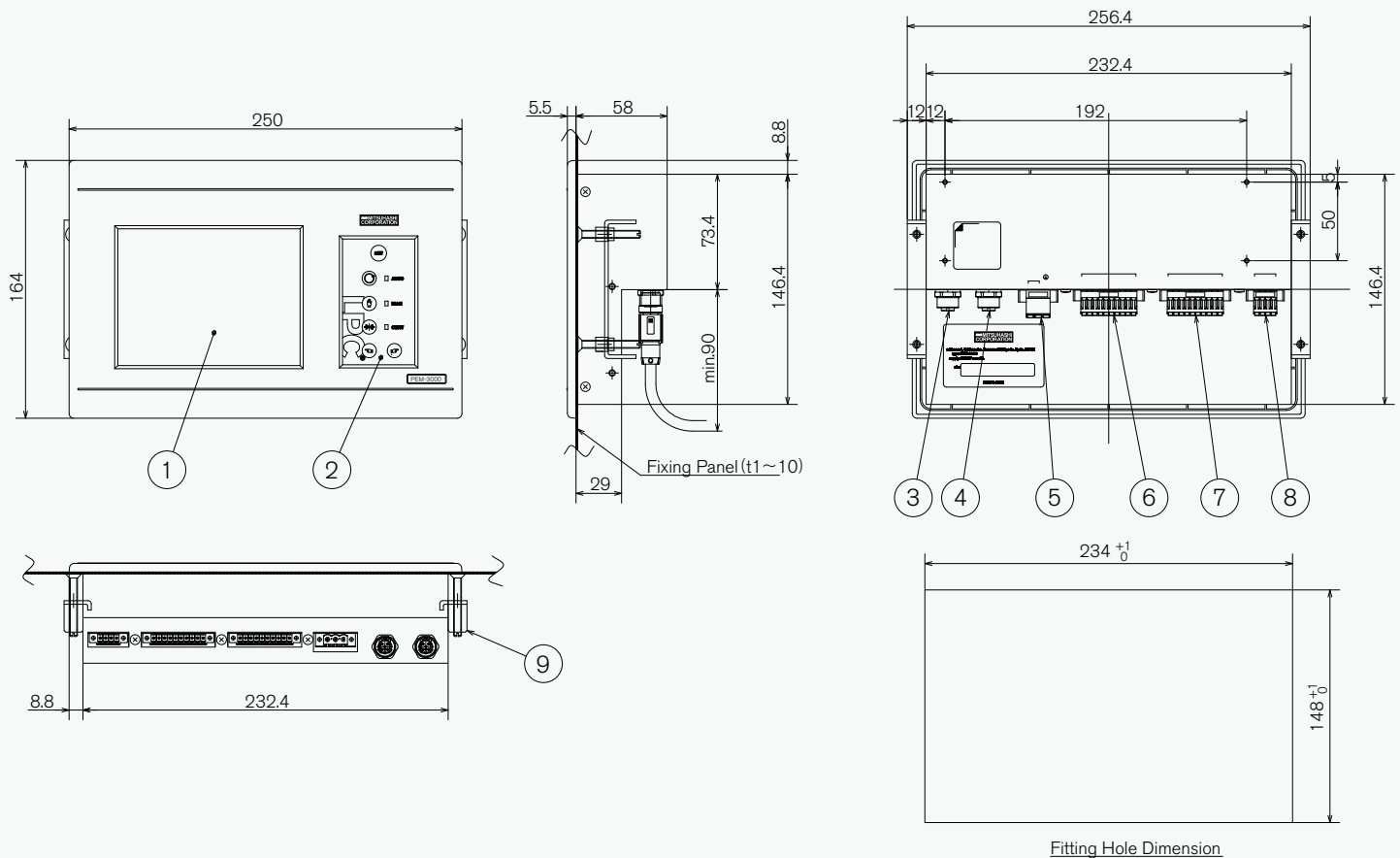
Technical Data

Dimension		Outside Drawing reference
Power Source		DC24V \pm 20% (It supplies from a connector terminal box. Connector terminal box Type : FKCN2.5/3-STF-5.08, Phoenix Contact)
Consumption Current		500 mA or less (Power Supply Voltage. It is consumption current at the time of operation of PEM-3000 simple in DC24V.) ※ The power source of circumference connection equipment, such as a sensor, is supplied from PEM-3000. Please prepare a suitable power source after taking those power source capacity into consideration. Moreover, please keep the aggregate consumption current of the equipment which carries out power source supply from PEM-3000 from exceeding 1.5A.
Mass		Approx.1.5 kg
Installation Environment	Temperature	0 ~ 40°C
	Humidity	Below 80%RH (No condensation)
	Atmosphere	Indoor (direct rays should not hit) It is airy. Corrosive Gases · Flammable Gases · Oil Mist · There is no dust.
	Others	Please avoid installation at a place with much vibration.
Connection Device	Sensor	A maximum of four connections is possible. · Single : The edge or line mark of a web is detected. · Pair : Both edge of a web (Centering control) · PSM-75 series, PSM-46 series, PSM-270
	Driving Device	· Actuator : PDM-100, · Roll Guider : PGM-15, · Other DC motor mounting driving device : PG series,PD-400, PD-610, PD-650 Notes) When using DC motor mounting driving device, DC motor driver PCM-D40 is needed.
	Option	Extension I/O Module : PXM-08 Input 10 Points (Reference-Position Set, Mode Select, Driving Device Operation, Bank Memory Select) Output 10 Points (Sensing State, Mode State, Stroke End & Center of Driving Device, Bank State, System Run)
Display	5.7inchTFT Color Display with Touch Panel	
Display Language	Japanese, English, Chinese, Korean	
Operation	Sheet Key and Touch Panel	
External Control Terminals	Input 8 Points (Reference position SET, Mode select, Bank memory selection, Driving device operation or bank selection) ※ Driving device operation and bank selection choose a terminal function by selection with a parameter. Output 10 Points (Sensor state ,Mode state ,Comparator output ,NG, Driving device center) Two analog outputs for a monitor (Control sensor output, The sensor output for comparators, Driving device working speed) (The above-mentioned terminal is connected in a connector terminal block, Connector terminal block Type : FMC1.5/4-STF-3.5, Phoenix Contact)	

Notes) In order to connect equipment, such as PEM-3000, a sensor, a driving device , and other options, the cable only for a CAN bus and a branching connector are needed. Please choose according to the equipment to connect. We are preparing the above-mentioned cable and connectors at our company. (Option)



Outline Drawing



Fitting Hole Dimension

- ① Touch Panel
- ② Operation Switch (Sheet Key)
- ③④ Peripheral Device Connector (Sensor, Driving Device, etc.)
- ⑤ Power Supply Terminal
- ⑥ Control Output Terminal (8 Points)
- ⑦ Control Signal Input Terminal (8 Points)
- ⑧ Analog Output Terminal (2 Points)
- ⑨ Fixture (Accessory)



Lending “hands” to replace human hands.

<https://www.mitsuhashi-corp.co.jp/en/>

株式会社 三橋製作所

- ☐ Head Office/
Factory
- ☐ Tokyo Office/
Overseas Sales Division
- ☐ Kyushu Office

MITSUHASHI CORPORATION

1 Sekizan-cho Yamanouchi Ukyo-ku Kyoto
615-0082 Japan
TEL: +81-75-316-3300 FAX: +81-75-313-7595

Yoshikuni Komagata Bldg. 9F 2-4-11 Komagata
Taitoh-ku Tokyo 111-0043 Japan
TEL: +81-3-3847-9751 FAX: +81-3-3847-9753

Room 3 Bldg. D Office Pareia Naka II 1-5-3 Naka
Onojo City Fukuoka 816-0906 Japan
TEL: +81-92-476-3800 FAX: +81-92-476-3801