

Chain Sachet Folding / Casing Machine at 50m/minute with Compact X-Ray Inspection Unit

## KEX-1010X POUCH LOADER with X-Ray

# Vertical Feeding for High Accuracy X-Ray Inspection



### Features

1. Vertical feeding for high accuracy inspection
  - ① Belt-free feeding enables direct inspection of the sachets achieving high accuracy inspection
  - ② Content volume inspection accuracy is  $\pm 2\%$  ( $\pm 3\sigma$ ) (Subject to change based on contents and/or film material)
  - ③ Foreign substance inspection accuracy is SUS fragment  $\phi 0.8\text{mm}$  (Subject to change based on contents and/or film material)
2. Compact X-Ray unit designed for minimum footprint & safety first
  - ① Compact & high performance X-Ray unit (ANRITSU INFIVIS CO., LTD.)
  - ② X-Ray unit designed to fit into the existing KE-1010X equipment
  - ③ X-Ray unit FX-1000 may be adopted to your current sachet casing equipment
  - ④ No lead shield for smooth feeding (X-Ray leakage is maintained at safe level  $1 \mu\text{ Sv/h}$  without lead shield)
  - ⑤ Seal range inspection, content sharp inspection are also available (Option)
3. Dedicated software for X-Ray inspection is designed for easy operation
  - ① 15" color LCD touch panel for operation is dialogue type, assuring clear view and easy operation
  - ② Newly developed algorithm dedicated for chain sachet products enables easy condition setting
  - ③ X-Ray penetration image and inspection result can be monitored on the operation panel
  - ④ Data output is possible by using USB

## Basic

Inspection Capacity	10 – 50m/minute *Note 1
Sachet Specification	Sachet Type: 3-Side Seal, 4-Side Seal Film Material: Aluminum, Transparent PP, etc. Contents: Powder, Liquid, Solids Sachet Size: Width 30 – 100mm, Length Max. 150mm Seal Width: Horizontal Seal: over 10mm, Vertical Seal: over 8mm
Volume Inspection Accuracy	Relative weight $\pm 2\%$ ( $\pm 3 \sigma$ ) *Note 1
Foreign Substance Detection Sensitivity	SUS fragment $\phi 0.8$ *Note 1
Power Source	X-Ray Unit: AC200V, 50/60Hz, 3- Phase, 1kVA Sachet Caser: AC200V, 50/60Hz, 3-Phase, 2.5kVA
Weight	X-ray equipment approx. 200kg Sachet Caser: approx. 350kg *Note 2
Air Utility	0.5MPa, 80 $\ell$ /minute (ANR)

Note 1 : Inspection capacity and/or accuracy are subject to change based on sachet film material and/or contents.

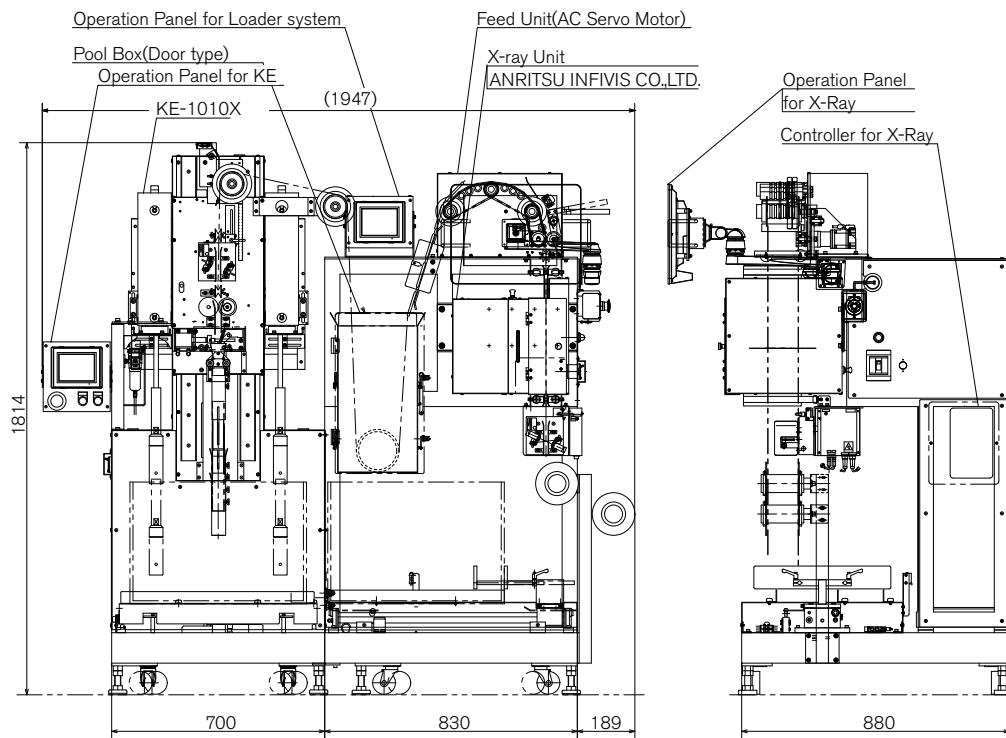
Note 2 : With full optional units

Note 3 : Please refer to separate catalogue for Sachet Caser detailed specifications

## General

- Newly developed X-Ray unit dedicated for inspection of chain sachets (powder, liquid, dried-food, etc.)
- Designed to inspect and detect volume weight and foreign substance of individual sachet, assuring to case good ones only
- Simple passline design for easy setting of chain sachet by opening the X-Ray unit cover
- R-L Type (refer to below drawing) and L-R Type available depending on sachet flow direction

## Overview



### 株式会社 三橋製作所 MITSUHASHI CORPORATION



[www.mitsubishi-corp.co.jp](http://www.mitsubishi-corp.co.jp)  
[info@mitsubishi-corp.co.jp](mailto:info@mitsubishi-corp.co.jp)

- Head Office/  
Factory
 1 Sekizan-cho Yamanouchi Ukyo-ku Kyoto  
615-0082 Japan  
TEL:+81-75-316-3300 FAX:+81-75-313-7595
- Tokyo Office/  
Overseas Sales Division
 Yoshikuni Komagata Bldg. 9F 2-4-11 Komagata  
Taitoh-ku Tokyo 111-0043 Japan  
TEL:+81-3-3847-9751 FAX:+81-3-3847-9753
- Kyushu Office
 Minamikindai Building 6F, 4-2-10 Hakataekiminami  
Hakata-ku Fukuoka 812-0016 Japan  
TEL:+81-92-476-3800 FAX:+81-92-476-3801