

Non Contact pitch measurement unit PU-3

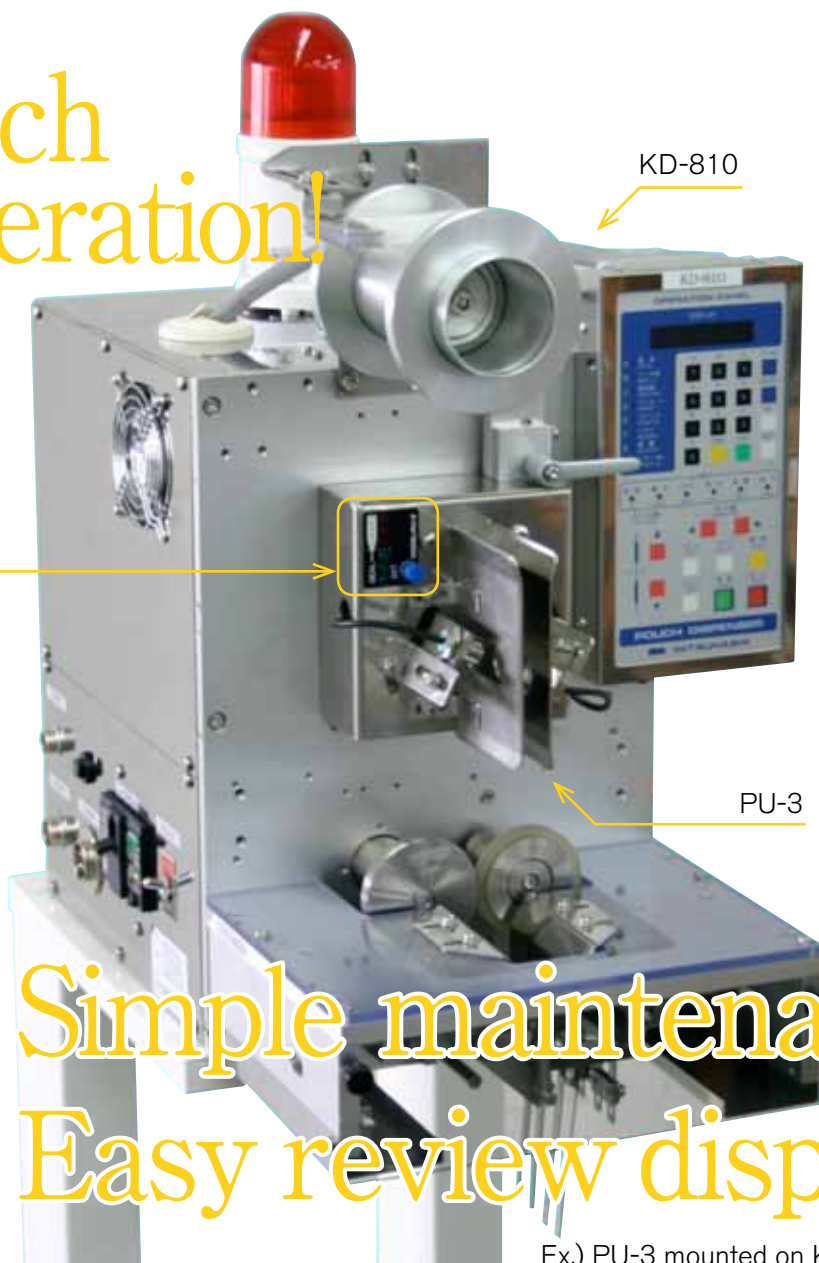
POUCH DETECTOR PU-3

One-touch
Easy operation!

PU-3 control panel



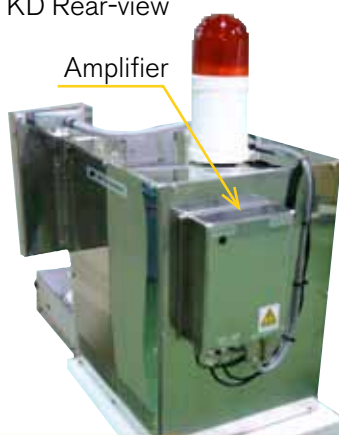
KD-810



PU-3

KD Rear-view

Amplifier



Simple maintenance!
Easy review display!

Ex.) PU-3 mounted on KD-810

Outline

A non-contact pitch measurement unit is used for pitch detection of a pouch dispenser "KD-810" etc. Compared with the conventional roll type thickness detection unit, handling is easy and realizes positive pitch measurement.

Characteristic

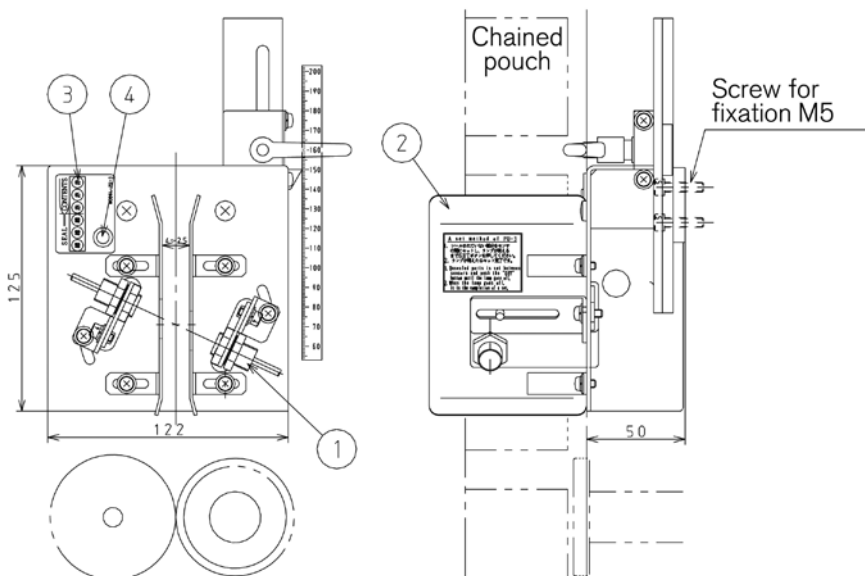
- The pitch of any pouches is stably detected.
Regardless of contents (powder, liquid, ingredients) and the package material (vinyl, PET, and aluminum) of a pouch, it is applicable.
- A one push of a SET switch makes adjustment complete. A product change is also speedy.
- An operation panel is a legible LED display, A disregard level is also distinguishable in an instant.

Specifications

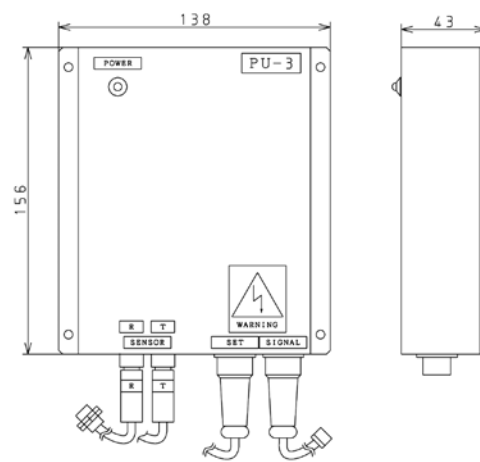
Composition	Detection parts, amplifier parts, cables
Capacity	500 pcs/min
Surface Treatment	Stainless
Output Signal	It is the output ON when the contents portion of a pouch is detected. NPN open collector output 30V 10mA
Power supply	DC24V/DC12V 4W
Environment	Temperature : 0 ~ 40°C Humidity : Less than 80% RH
models	KD、KE、KS、FW series

schematic

【 Detection parts 】



【 Amplifier parts 】



- ① Sensor
- ② Guide plate
- ③ Detection lamp
- ④ Push button switch



www.mitsubishi-corp.co.jp
info@mitsubishi-corp.co.jp

株式会社 三橋製作所 MITSUHASHI CORPORATION

- Head Office/ Factory**
1 Sekizan-cho Yamanouchi Ukyo-ku Kyoto
615-0082 Japan
TEL:+81-75-316-3300 FAX:+81-75-313-7595
- Tokyo Office/ Overseas Sales Division**
Yoshikuni Komagata Bldg. 9F 2-4-11 Komagata
Taitoh-ku Tokyo 111-0043 Japan
TEL:+81-3-3847-9751 FAX:+81-3-3847-9753
- Kyushu Office**
Minamikindai Building 6F, 4-2-10 Hakataekiminami
Hakata-ku Fukuoka 812-0016 Japan
TEL:+81-92-476-3800 FAX:+81-92-476-3801