

FW-1000 CHAIN POUCH WINDER



Features

- High speed winding capacity at 70m/min
- Clear view 5.5 inch touch-panel
- Capable of low tension winding (1N)
- Memory up to 10 different product data, easy operation to meet various products
- Easy removing of roll core by using AIREX SHAFT (Optional)

Basic Specs

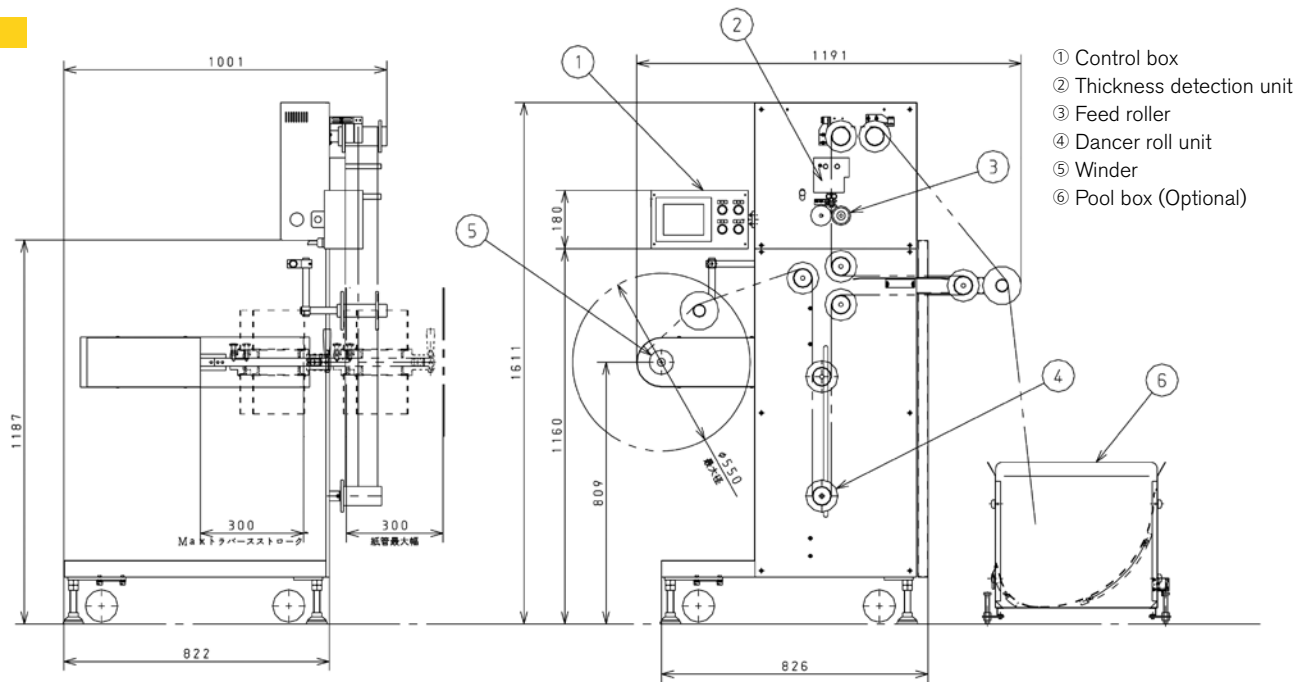
Winding Capacity	Max. 70m/minute	Roll Diameter	φ 75 – φ 550mm
Winding Direction	Left / Right Adjustable	Winding Width	0 – 300mm
Pouch Specification	Pouch Type: 3, 4-Seal Width: 20mm – 100mm Length: 20mm – 90mm	Core Diameter	Over φ 35mm (I.D.)
		Tension	1 – 30 N
		Power	AC200V, 50/60Hz, 3 Phase, 1.5Kva

*Winding capacity is subject to change based on pouch specifications and/or conditions.

Optional parts may be required based on the winding tension and hardness of the pouch material. Please refer to below chart for necessary optional parts.

Winding Tension [N]	~ 7	~ 15	~ 25	~ 30
Soft Film Material (Thin Material)	Standard (Nip Roller)	Liquid Unit	Belt Feed / Rubber Roller	
Hard Film Material (Thick Material)	Standard (Nip Roller)		Liquid Unit	Belt Feed / Rubber Roller

Overview



株式会社 三橋製作所 MITSUHASHI CORPORATION



www.mitsubishi-corp.co.jp
info@mitsubishi-corp.co.jp

- Head Office/ Factory
 1 Sekizan-cho Yamanouchi Ukyo-ku Kyoto
 615-0082 Japan
 TEL:+81-75-316-3300 FAX:+81-75-313-7595
- Tokyo Office/ Overseas Sales Division
 Yoshikuni Komagata Bldg. 9F 2-4-11 Komagata
 Taitoh-ku Tokyo 111-0043 Japan
 TEL:+81-3-3847-9751 FAX:+81-3-3847-9753
- Kyushu Office
 Minamikindai Building 6F, 4-2-10 Hakataekiminami
 Hakata-ku Fukuoka 812-0016 Japan
 TEL:+81-92-476-3800 FAX:+81-92-476-3801